

Performance certified is for installation type B - free inlet, ducted outlet.  
 Power rating (kW) does not include transmission losses.  
 Performance ratings do not include the effects of appurtenances (accessories).

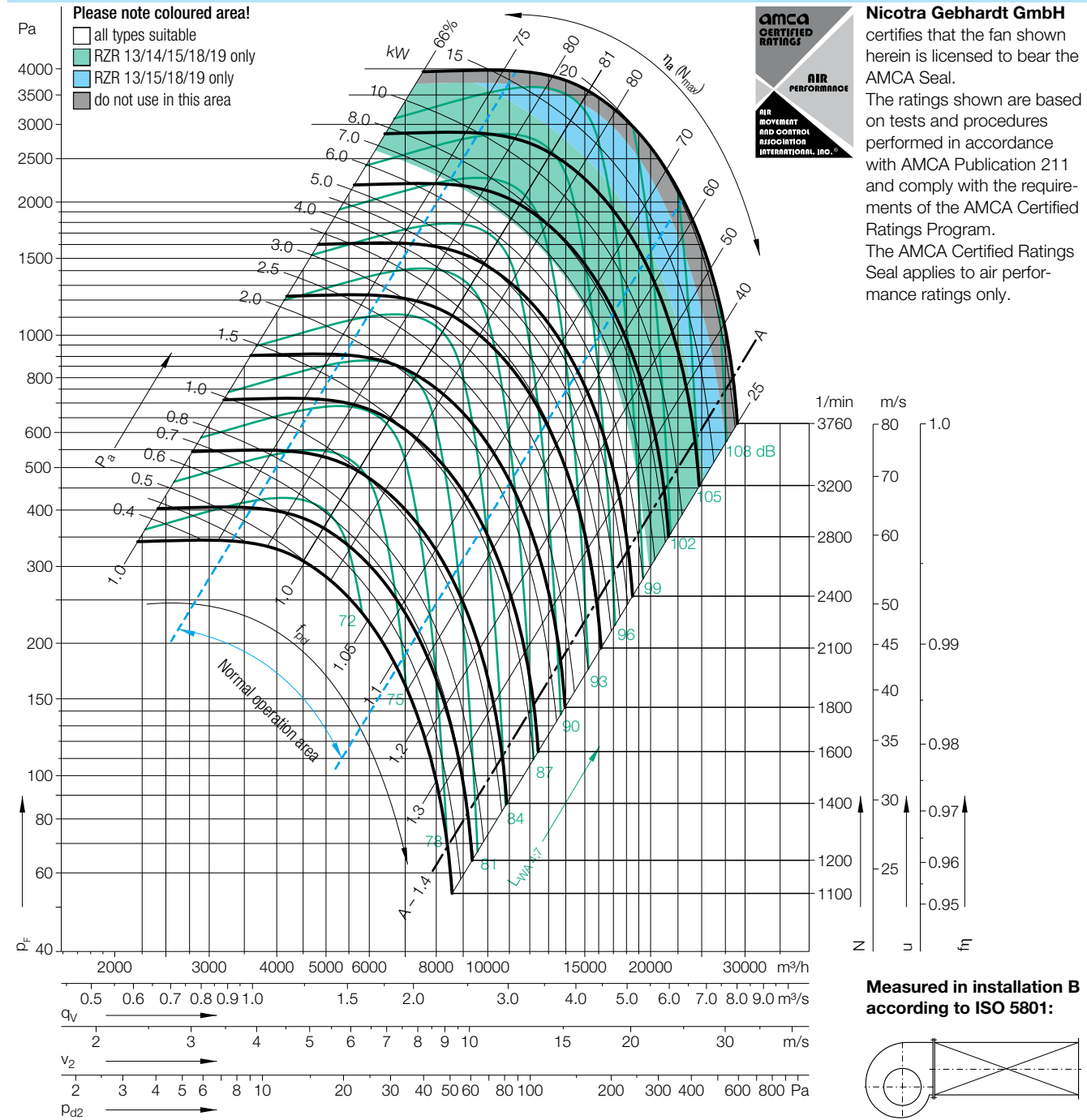
**Technical Data**

Impeller Data		
Impeller diameter	$D_r$	406 mm
Number of blades	$z$	12
Moment of Inertia	$J$	0.33 kgm <sup>2</sup>

Impeller Data		
Impeller weight	$m$	10.5 kg
Density of media	$\rho_1$	1.2 kg/m <sup>3</sup>
Tolerance class (DIN 24166)		1

Speed limits $N_{max}$ for ATEX execution		
RZR 11/12	<b>2552</b>	1/min
RZR 18	<b>2913</b>	1/min
RZR 13	<b>3145</b>	1/min

**Performance Curves**



Relative sound power level for inlet side  $L_{Wrel7}$  at octave centre frequencies  $f_c$

Speed	Duty point	63	125	250	500	1000	2000	4000	8000	Hz
≤1882 1/min	≤0.8 $q_{Vopt}$	0	2	0	-3	-6	-9	-12	-19	dB
	>0.8-1.2 $q_{Vopt}$	-2	1	-2	-3	-6	-8	-14	-20	dB
	>1.2-1.6 $q_{Vopt}$	-3	0	-1	-3	-6	-8	-14	-21	dB
	>1.6-1.8 $q_{Vopt}$	-5	-3	-3	-3	-6	-7	-13	-21	dB
	>1.8-2.0 $q_{Vopt}$	-5	-3	-3	-3	-6	-7	-13	-21	dB
>1882 1/min	≤0.8 $q_{Vopt}$	-2	-1	-3	-1	-6	-10	-15	-21	dB
	>0.8-1.2 $q_{Vopt}$	-7	-4	-5	-1	-6	-9	-14	-21	dB
	>1.2-1.6 $q_{Vopt}$	-10	-7	-8	-1	-5	-8	-13	-21	dB
	>1.6-1.8 $q_{Vopt}$	-10	-8	-8	-2	-6	-8	-11	-18	dB
	>1.8-2.0 $q_{Vopt}$	-10	-8	-8	-2	-6	-8	-11	-18	dB

Relative sound power level for discharge side  $L_{Wrel4}$  at octave centre frequencies  $f_c$

Speed	Duty point	63	125	250	500	1000	2000	4000	8000	Hz
≤1882 1/min	≤0.8 $q_{Vopt}$	13	7	4	-3	-8	-14	-17	-25	dB
	>0.8-1.2 $q_{Vopt}$	10	5	3	-2	-7	-13	-17	-25	dB
	>1.2-1.6 $q_{Vopt}$	7	2	2	-2	-6	-12	-18	-27	dB
	>1.6-1.8 $q_{Vopt}$	5	1	1	-2	-6	-10	-17	-27	dB
	>1.8-2.0 $q_{Vopt}$	5	1	1	-2	-6	-10	-17	-27	dB
>1882 1/min	≤0.8 $q_{Vopt}$	11	4	2	0	-7	-12	-17	-24	dB
	>0.8-1.2 $q_{Vopt}$	7	1	-2	-3	-6	-10	-15	-23	dB
	>1.2-1.6 $q_{Vopt}$	3	-2	-4	-3	-5	-9	-14	-23	dB
	>1.6-1.8 $q_{Vopt}$	2	-3	-5	-3	-5	-9	-12	-21	dB
	>1.8-2.0 $q_{Vopt}$	2	-3	-5	-3	-5	-9	-12	-21	dB